

CalderSafe. Data Acquisition for Electrofusion Welding.

Brought to you by:



What is CalderSafe®?

CalderSafe® is the latest technology available to acquire weld data from the job site without manually downloading directly from the Electrofusion Welder.

How does the CalderSafe system work?

CalderSafe is real-time data system that captures and sends electrofusion data on a per-weld basis so that you can oversee, record and approve joints from a distance.

The system comprises of a smartphone app, our relay server and the Weld Analyser PC app. The app pairs with an electrofusion welding unit via Bluetooth so that it can receive welding data from the unit.

The CalderSafe smartphone app is an Android based application, and can be downloaded from the Google Play Store®.



What does CalderSafe capture?

The CalderSafe app captures the GPS location, photographic evidence and all weld data, which is then merged, converted to a CZIP file and sent to pre-configured email addresses of your choice.

The mobile app has been designed to redirect all weld data through Caldervale Technology's dedicated server. Information is not stored or seen by any other person other than the email recipients.

How is Weld Data used?

The weld data contains vital information that can be read using the CalderSafe Weld Analyser software from any global location.

This provides quality assurance and verification for completed welds before any reinstatement works are carried out reducing risks of failed welds and unnecessary reworks.

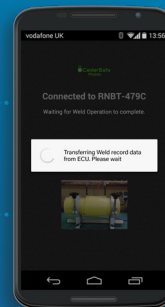
Weld Data Features

- GPS location of fused fittings
- Send weld data to 4 email addresses
- Up to 4 images can be taken allowing all angles of the joint to be viewed
- Provides 124 point graph of the weld
- Print summary or individual weld records



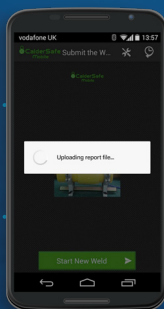
CalderSafe at a glance

1



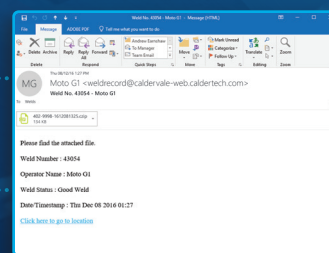
Welding data is transferred to smartphone device after completion via Bluetooth.

2



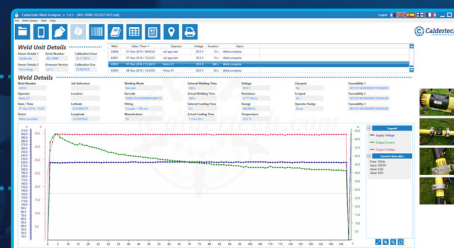
Data file is uploaded via Caldervale Technology's web server.

3



Data file is sent to pre-configured email addresses.

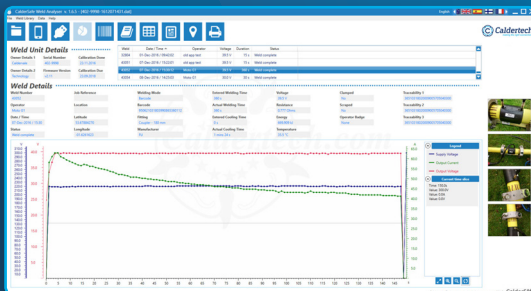
4



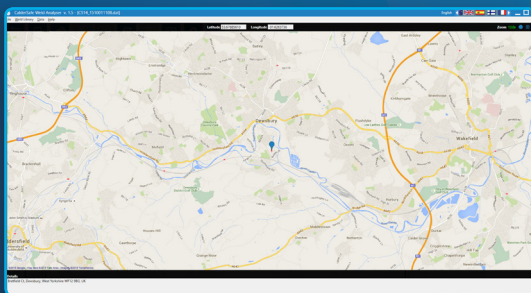
Data file is opened with CalderSafe Weld Analyser for quality verification and record keeping.

Additional CalderSafe® Features

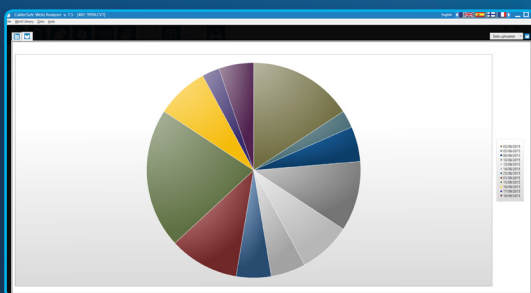
CalderSafe® records all of your joint data and allows you to analyse it in detail, from a 124 point weld graph to precise GPS locations and mass data charts.



Graph with 124 point data plot of supply voltage, output voltage and output current.



Google Maps are integrated to give visual reference of location.



Mass data can be analysed through pie and bar charts.

Enabled by:



UPG Pipe Systems
15 Raiha St, Porirua,
Wellington 5022, NZ
T: 0800 473 100
E: sales@upg.net.nz